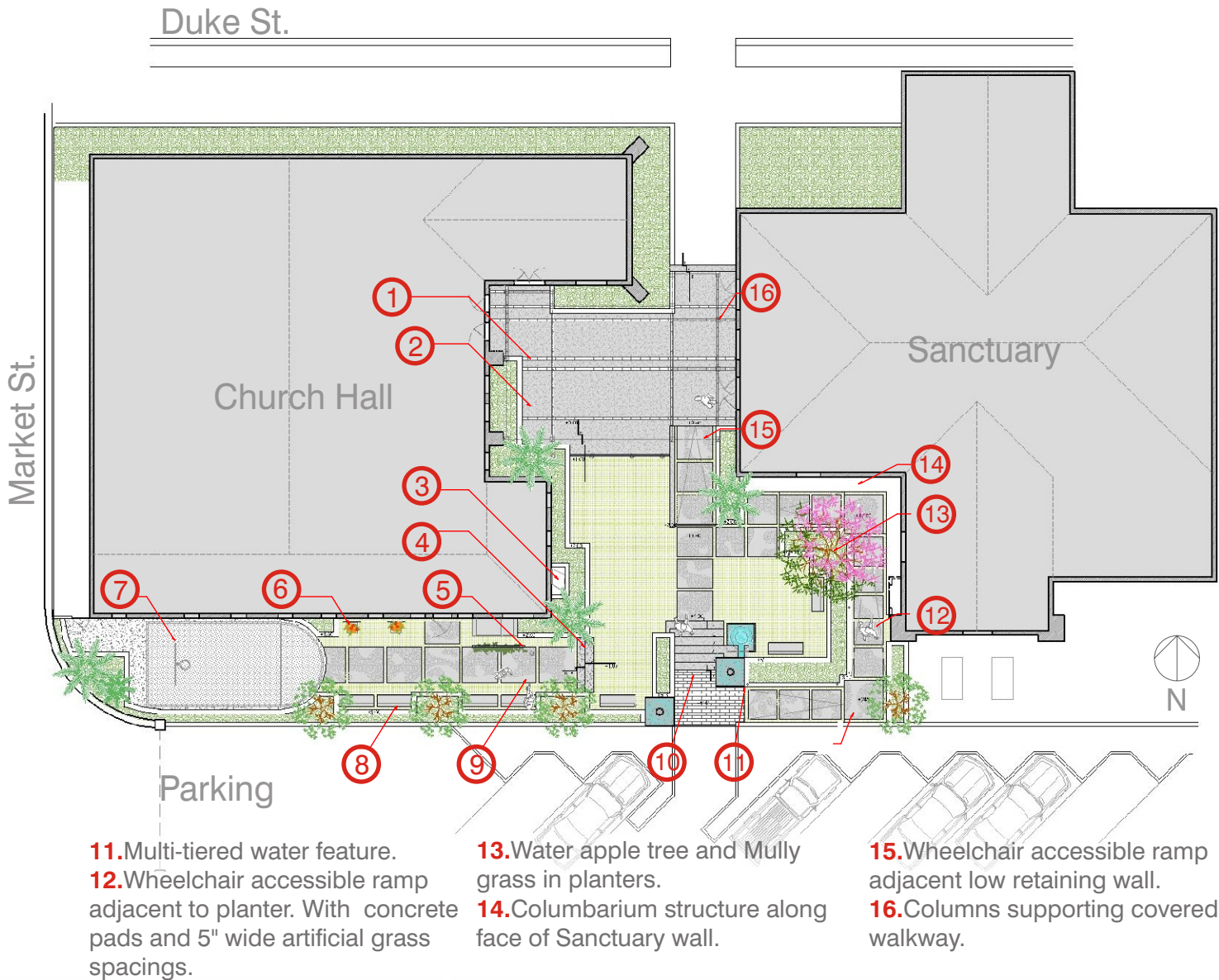
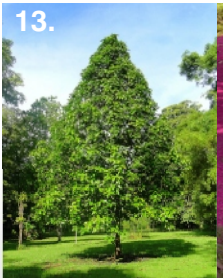
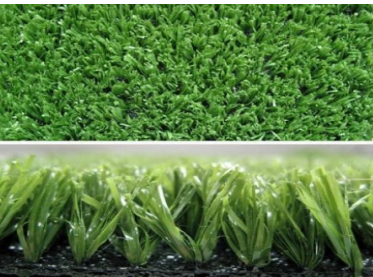
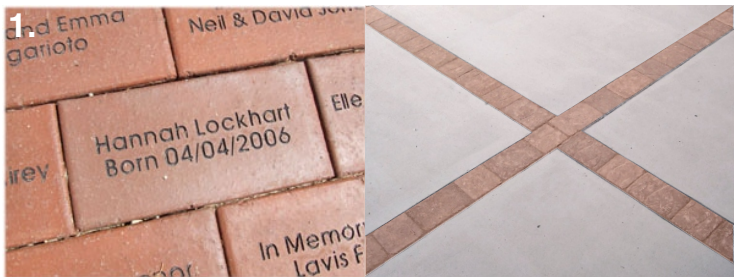


# Key Plan & Details



- 1.** 4" x 8" Clay bricks in running bond pattern/ donor pavers.
- 2.** Covered hardscape area between the buildings entrances / Concrete finish.
- 3.** Sanitary sewer to remain accessible.
- 4.** Steps to lower level basket ball area.
- 5.** Freestanding metal trellis structure within at-grade planting bed to host climbing vines for screening mechanical equipment.
- 6.** Wall mounted metal trellis structure with accessory concrete planter to host climbing vines.
- 7.** Existing basket ball court area to be moved eastward to accommodate new raised planter.
- 8.** Precast concrete (donor) benches throughout area.
- 9.** Concrete pads imprinted with random leaves pattern and 5" wide artificial grass spacings.
- 10.** Steps to upper level parking area.
- 11.** Multi-tiered water feature.
- 12.** Wheelchair accessible ramp adjacent to planter. With concrete pads and 5" wide artificial grass spacings.
- 13.** Water apple tree and Mully grass in planters.
- 14.** Columbarium structure along face of Sanctuary wall.
- 15.** Wheelchair accessible ramp adjacent low retaining wall.
- 16.** Columns supporting covered walkway.

# Materials & Details



# Renderings



Steps & Water feature



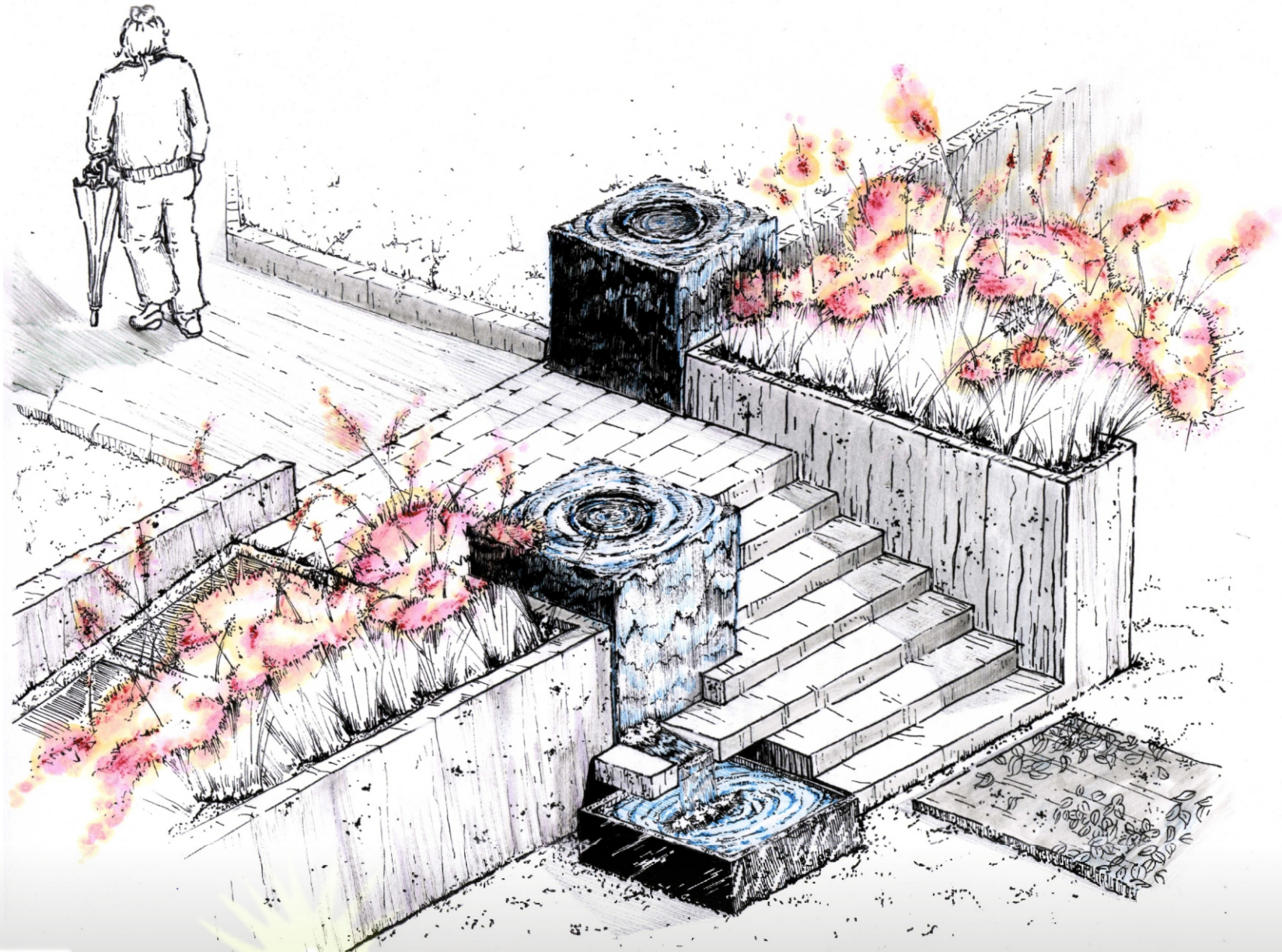
Memorial Garden



Trellis & Sitting area

# Water Feature

On parking access



Terrain

St. Andrew's Presbyterian **Kirk**

W: [terraindesignbahamas.com](http://terraindesignbahamas.com) / M: [terrain@coralwave.com](mailto:terrain@coralwave.com) / P: 242.394.8114 / P. O. Box N-3144